

College of Nursing

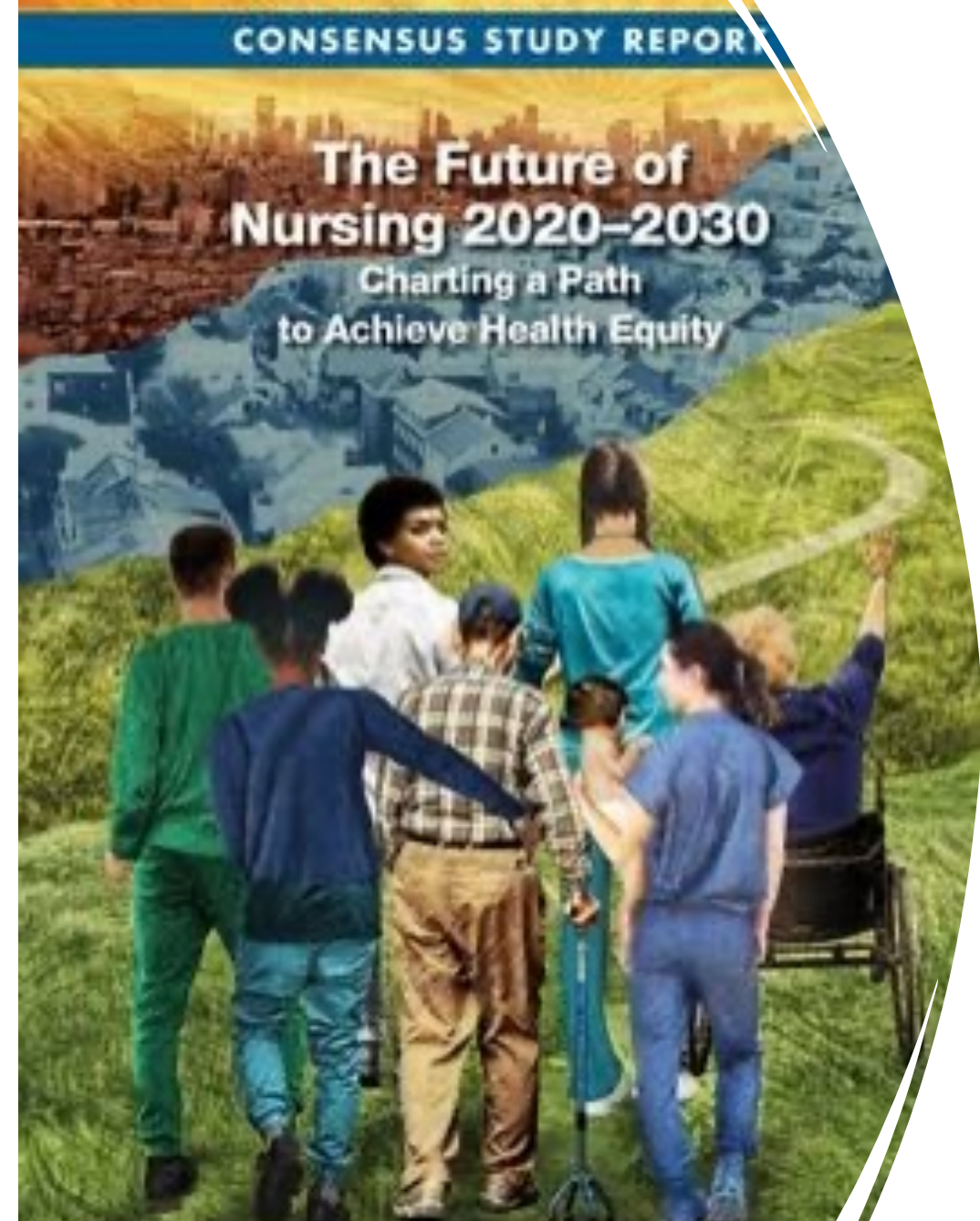
Addressing Health Equity Through Faculty Practice, Education and Scholarship

Tess Judge-Ellis, DNP, ARNP, FNP-BC, PMHNP-BC, FAANP

September 22, 2023

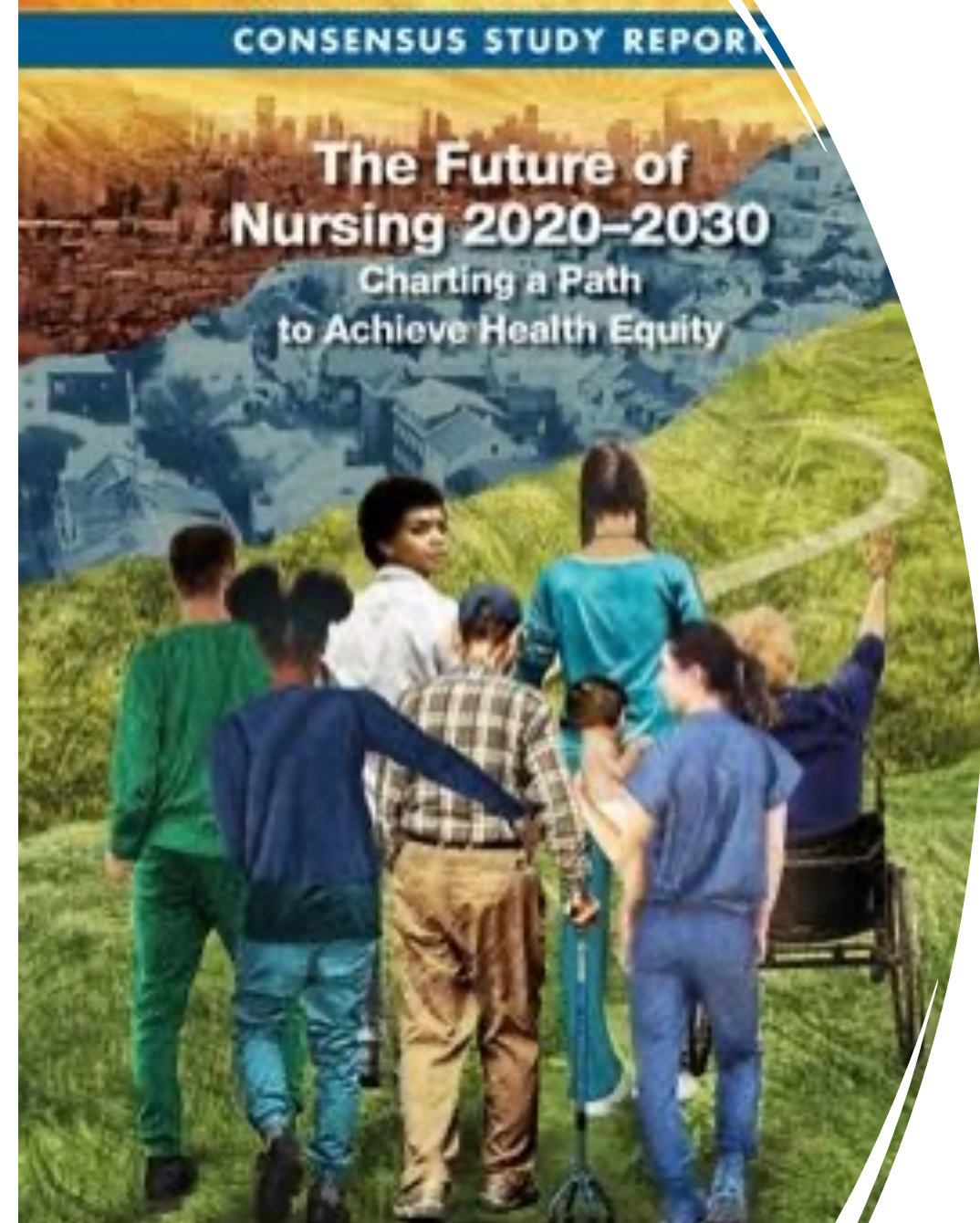
Future of Nursing Outcomes

- *“Nurses are prepared to act individually, through teams, and across sectors to meet challenges associated with an aging population, access to primary care, mental and behavioral health problems, structural racism, high maternal mortality and morbidity, and elimination of the disproportionate disease burden carried by specific segments of the U.S. population.”*



Future of Nursing Outcome

- *“Nurses focus on preventive person-centered care and have an orientation toward innovation, always seeking new opportunities for growth and development. They expand their roles, work in new settings and in new ways, and markedly expand their partnerships connecting health and health care with all individuals and communities.”*



Faculty Practice with Community Partners



Chatham Oaks Residential Care Facility

January 2019

16 beds

Primary care and
psychiatry



Cross Park Place Apartments

January 2019

Chronically homeless with psychiatric and/or
physical disabilities



501 Southgate Apartments



Student Involvement

- DNP student involvement
 - Psychiatric-Mental Health
 - Primary Care
 - Dually Certified
- RN to BSN
 - Community health rotation

Unique teaching points

- Broad scope of advanced practice nursing
 - More than diagnosing and prescribing
- Trauma informed care
- Harm reduction
- Holistic lens of the dual certified nurse practitioner
- Interdisciplinary partnerships are different
- Barriers, opportunities and facilitators



DNP project

Development of a Medication Management Program in Permanent Supportive Housing

Jessica Coffey, DNP, ARNP, FNP-C

Teresa Judge-Ellis, DNP, ARNP, FNP-BC, PMHNP-BC, FAANP

Andrea Achenbach, DNP, ARNP, FNP-C

Anne Gentil-Archer, DNP, ARNP, AGNP-C, PMHNP-BC

Erin Sullivan, BA

Maddilyn Boche, MSW

Coraline Dawley

Kathleen Buckwalter, PhD, RN, FAAN

Summary: We describe a nurse-led project that aimed to assist a permanent supportive housing facility for chronically homeless individuals to improve medication adherence by refining a medication management program. Client and staff engagement through needs assessment, feedback, and evaluation formed the foundation for a sustainable medication management program.

Key words: Medication adherence, chronic homelessness, medication management, multiple chronic illnesses, permanent supportive housing.





Agape Café and the undergraduate students

College of Nursing

Thank you!

Tess Judge-Ellis, DNP, ARNP, FNP-BC, PMHNP-BC, FAANP

September 22, 2023